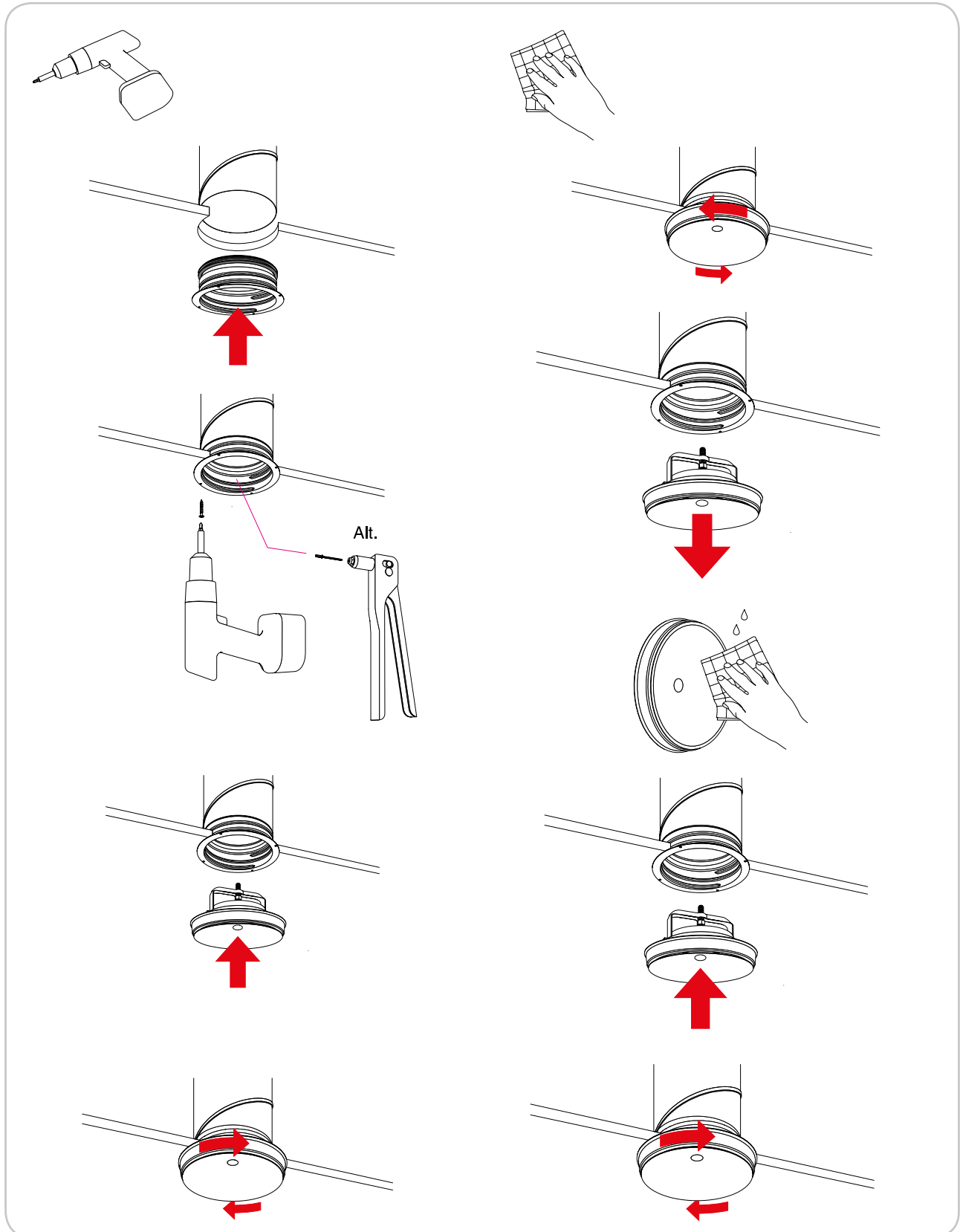




# Valve

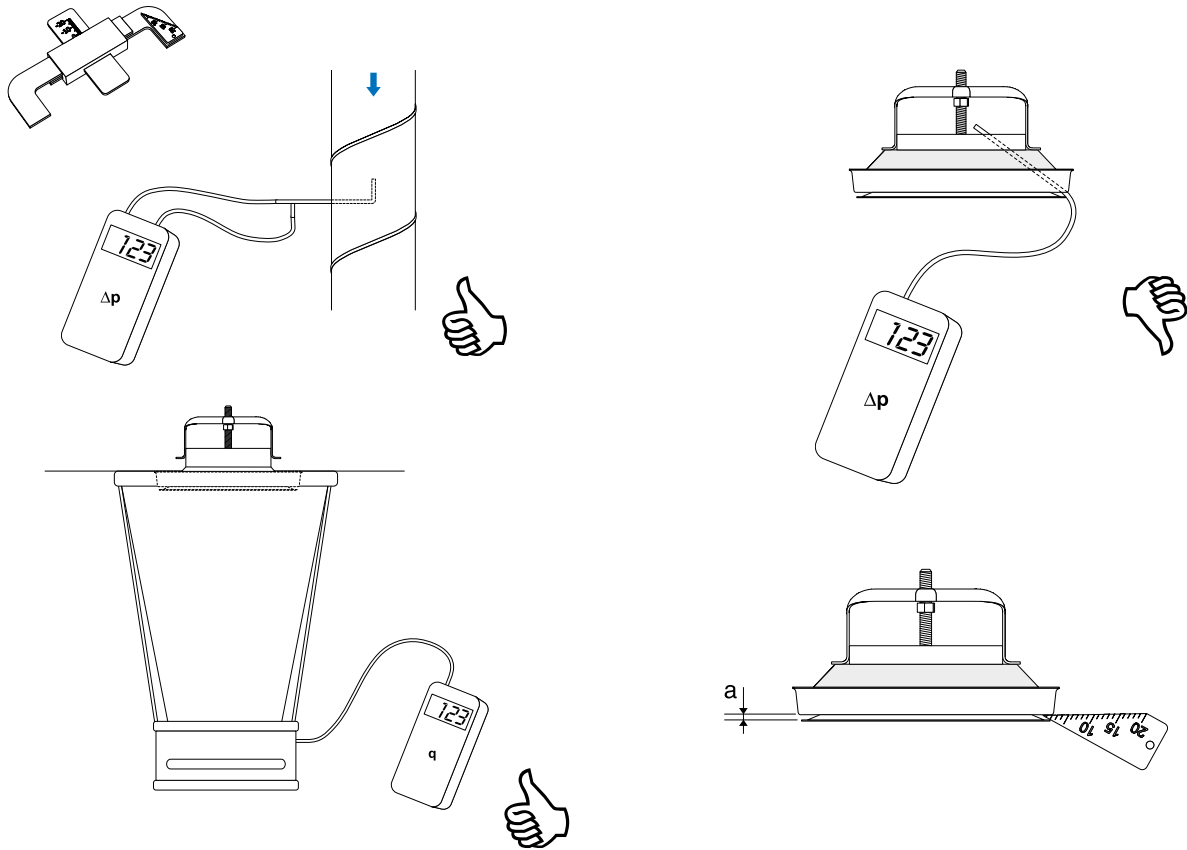
KIR





# Valve

## KIR



### Without sector plate

Ø mm	Valve mounted in	Setting a [mm]					
		a	2	4	6	9	12
100	Duct	k	1,09	1,56	2,11	2,81	4,31
		a	4	6	9	12	15
125	Duct	k	1,95	2,99	4,41	5,72	7,41
		a	4	6	10	15	20
160	Duct	k	2,10	3,74	5,83	9,66	12,8

### With sector plate

Ø mm	Valve mounted in	Setting a [mm]					
		a	2	4	6	9	12
100	Duct	k	0,882	1,45	1,75	2,49	2,89
		a	4	6	9	12	15
125	Duct	k	1,97	2,65	3,40	4,23	4,77
		a	4	6	10	15	20
160	Duct	k	1,69	2,73	4,39	5,91	7,35