

Theatre diffuser

CCU



Description

CCU is a circular displacement diffuser for installation under seats in theatres, auditoriums, etc. The diffuser is supplied with a circular connection. The diffuser can be supplied with a fixed resistance, adapted to the correct air volume and pressure, specified according to the actual conditions.

- Circular connection with Lindab Safe.
- The diffuser can be supplied with a fixed resistance at a specified pressure setting.
- The diffuser is available in other dimensions.

Maintenance

The front plate of the diffuser can be removed to enable cleaning of the internal components. The visible parts of the diffuser can be wiped with a damp cloth.

Materials and finish

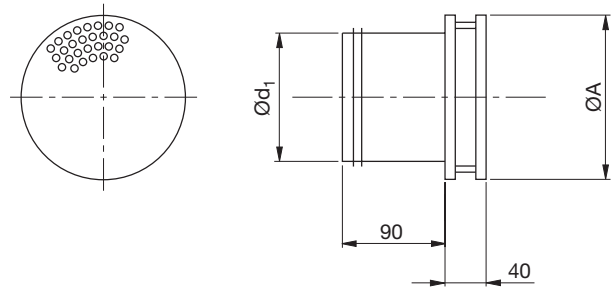
Diffuser: Galvanised steel
 Front plate: 1 mm galvanised steel
 Standard finish: Powder-coated
 Standard colour: RAL 9010 or 9003, gloss 30

The diffuser is available in other colours. Please contact Lindab's sales department for further information.

Order code

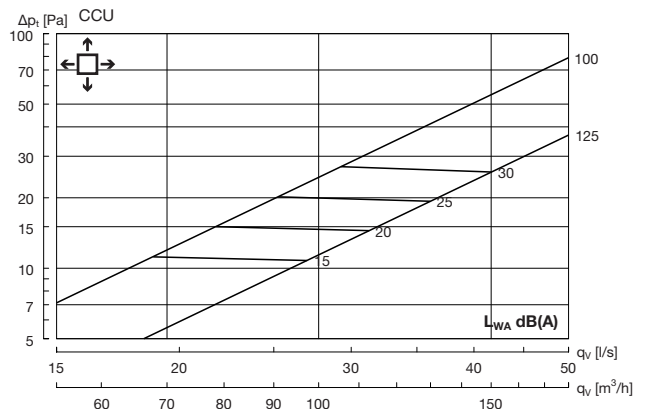
Product CCU aaa
Type _____
 Size Ød: Ø100, 125
 Example: CCU-125

Dimension



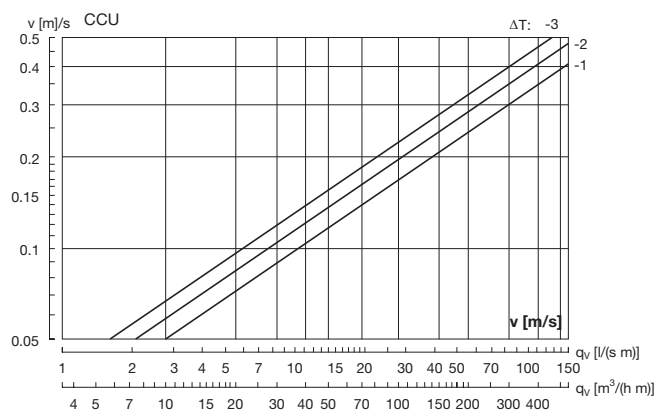
Size	ØA mm	ØD ₁ mm	Weight kg
100	140	100	0.40
125	160	125	0.50

Pressure, sound level



Size	63	125	250	500	1K	2K	4K	8K
100	10	1	-2	-3	-3	-11	-19	-29
125	9	-1	-2	-3	-3	-12	-20	-19

Near zone



The speed is measured 0.5 m from the diffuser.