

CJMD

400 °C/2h and 300 °C/2h extractor fan units with linear inlet and outlet



400 °C/2h extractor fan units with acoustically insulated boxed for immersed operation in fire risk zones.

Fan:

- Galvanised sheet steel structure with thermal insulation and acoustic insulation.
- Impeller made of sheet steel.
- Approved in accordance with standard EN 12101-3, with certificate no.: 0370-CPR-0399.
- Linear airflow direction.

Motor:

- Class H motors for S1 continuous operation and S2 emergency use. With ball bearings and IP55 protection.

- Motors with IE3 efficiency for powers equal to or greater than 0.75 kW, except single-phase, 2-speed and 8-pole.
- Three-phase 230/400 V 50 Hz (up to 3 kW) and 400/690 V 50 Hz (powers greater than 3 kW).
- Maximum temperature of air to be carried: S1 -25 °C +40 °C continuous service, also suitable for warm climates with temperatures up to 50 °C. S2 operation, 300 °C/2h, 400 °C/2h.

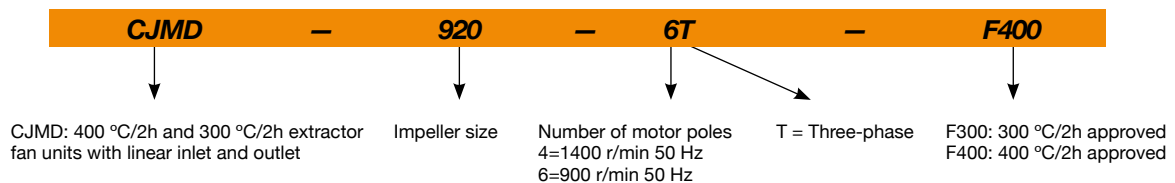
Finish:

- Anti-corrosive in galvanized steel sheet.

On request:

- Fans with 2 speed motor.

Order code



Technical characteristics

Model	Speed (r/min)	Maximum admissible current (A)			Installed power (kW)	Maximum flow rate (m³/h)	Sound pressure level ¹ dB (A)	Approx. weight (Kg)
		230V	400V	690V				
CJMD-600-4T IE3	1425	3.08	1.79		0.75	2440	51	68
CJMD-665-4T IE3	1435	4.10	2.37		1.10	3380	55	80
CJMD-730-4T IE3	1465	7.86	4.52		2.20	5000	59	100
CJMD-730-6T IE3	950	3.36	1.93		0.75	3490	45	95
CJMD-800-4T IE3	1450		7.95	4.61	4.00	6850	64	132
CJMD-800-6T IE3	955	6.25	3.62		1.50	5270	51	116
CJMD-825-6T IE3	960	9.78	5.62		2.20	7370	55	146
CJMD-885-6T IE3	960	9.78	5.62		2.20	8100	58	164
CJMD-905-4T IE3	1425	3.08	1.79		0.75	5830	59	133
CJMD-920-6T IE3	960	9.78	5.62		2.20	7270	66	184
CJMD-960-4T IE3	1435	4.10	2.37		1.10	8100	62	185
CJMD-1020-4T IE3	1440	5.89	3.38		1.50	10600	64	198
CJMD-1020-6T IE3	950	3.36	1.93		0.75	7410	54	197
CJMD-1160-6T IE3	970		8.37	4.82	4.00	11050	68	263
CJMD-1225-4T IE3	1455	11.01	6.33		3.00	15240	70	279
CJMD-1225-6T IE3	950	4.73	2.72		1.10	10050	62	274
CJMD-1330-4T IE3	1465		10.40	6.04	5.50	24490	72	409
CJMD-1330-6T IE3	955	6.25	3.62		1.50	16100	62	370
CJMD-1550-4T IE3	1480		20.70	11.99	11.00	34760	78	553
CJMD-1550-6T IE3	970	12.80	6.36		3.00	23010	69	501

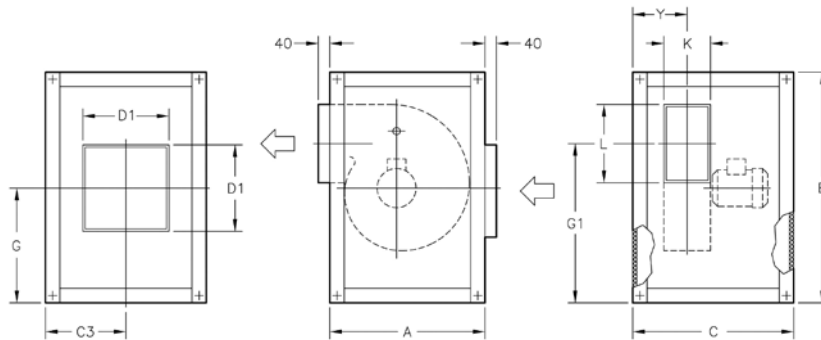
¹ Irradiated sound pressure level in dB(A) at a distance of 3 m.

Acoustic characteristics

Irradiated sound power spectrum Lw(A) in dB(A) per Hz frequency band

	63	125	250	500	1000	2000	4000	8000		63	125	250	500	1000	2000	4000	8000
CJMD-600-4T	33	43	54	61	65	62	60	53	CJMD-960-4T	51	64	70	75	72	75	70	56
CJMD-665-4T	37	47	58	65	69	66	64	57	CJMD-1020-4T	56	66	74	76	75	77	68	58
CJMD-730-4T	41	51	62	69	73	70	68	61	CJMD-1020-6T	45	57	64	69	65	61	54	46
CJMD-730-6T	27	37	48	55	59	56	54	47	CJMD-1160-6T	50	60	71	78	82	80	78	70
CJMD-800-4T	47	56	67	74	78	76	74	67	CJMD-1225-4T	61	70	83	79	82	83	77	63
CJMD-800-6T	34	43	54	61	65	63	61	54	CJMD-1225-6T	53	61	73	75	72	73	63	52
CJMD-825-6T	38	47	58	65	69	67	65	58	CJMD-1330-4T	72	77	83	85	83	80	73	65
CJMD-885-6T	41	50	61	68	72	70	68	61	CJMD-1330-6T	61	62	74	74	73	75	65	55
CJMD-905-4T	48	62	68	71	71	72	62	51	CJMD-1550-4T	75	76	85	88	90	91	87	74
CJMD-920-6T	48	58	69	76	80	78	76	68	CJMD-1550-6T	65	65	79	78	82	82	71	60

Dimensions mm



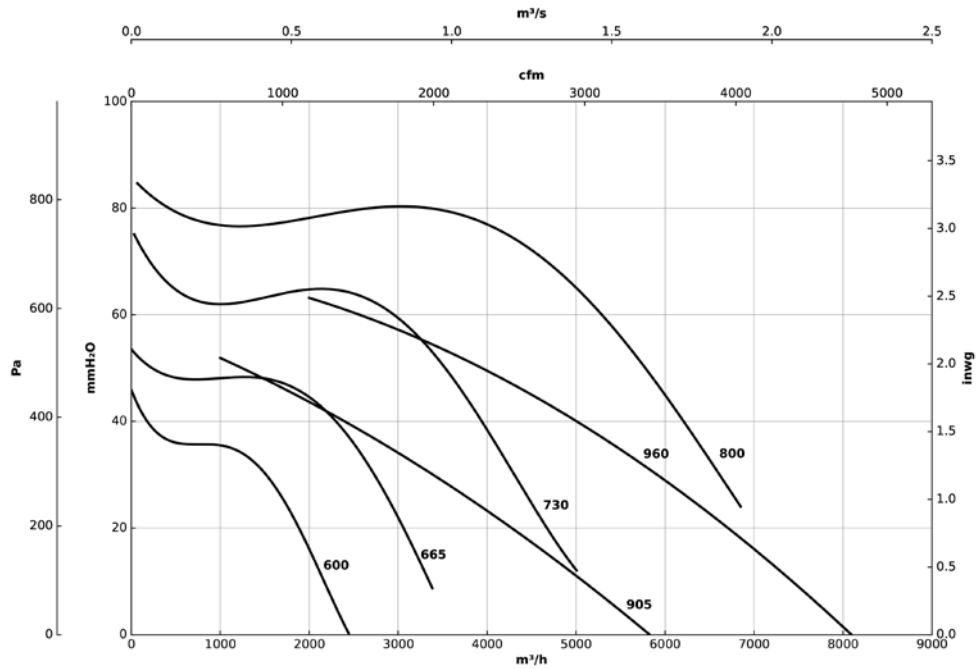
	A	B	C	C3	D1	G	G1	K	L	Y
CJMD-600-4T	735	755	604	302	400	378	500	140	215	190
CJMD-665-4T	790	810	678	339	400	405	540	165	250	215
CJMD-730-4T	855	874	748	374	400	437	577	180	295	237
CJMD-730-6T	855	874	748	374	400	437	577	180	295	237
CJMD-800-4T	941	961	798	399	500	481	653	200	320	264
CJMD-800-6T	941	961	798	399	500	481	653	200	320	264
CJMD-825-6T	1039	1059	892	446	500	530	770	230	280	296
CJMD-885-6T	1148	1168	938	469	500	585	849	250	320	330
CJMD-905-4T	970	990	896	448	500	495	636	315	400	398
CJMD-920-6T	1268	1287	954	477	600	644	945	284	360	372
CJMD-960-4T	1060	1080	966	483	600	540	694	355	450	443
CJMD-1020-4T	1150	1170	1038	519	800	585	756	400	500	490
CJMD-1020-6T	1150	1170	1038	519	800	585	756	400	500	490
CJMD-1160-6T	1375	1395	1098	549	800	698	999	315	450	414
CJMD-1225-4T	1204	1284	1258	629	800	642	836	450	560	545
CJMD-1225-6T	1204	1284	1258	629	800	642	836	450	560	545
CJMD-1330-4T	1338	1418	1474	737	800	709	921	500	630	620
CJMD-1330-6T	1338	1418	1474	737	800	709	921	500	630	620
CJMD-1550-4T	1495	1575	1648	824	1000	788	1032	560	710	675
CJMD-1550-6T	1495	1575	1648	824	1000	788	1032	560	710	675

Characteristic curves

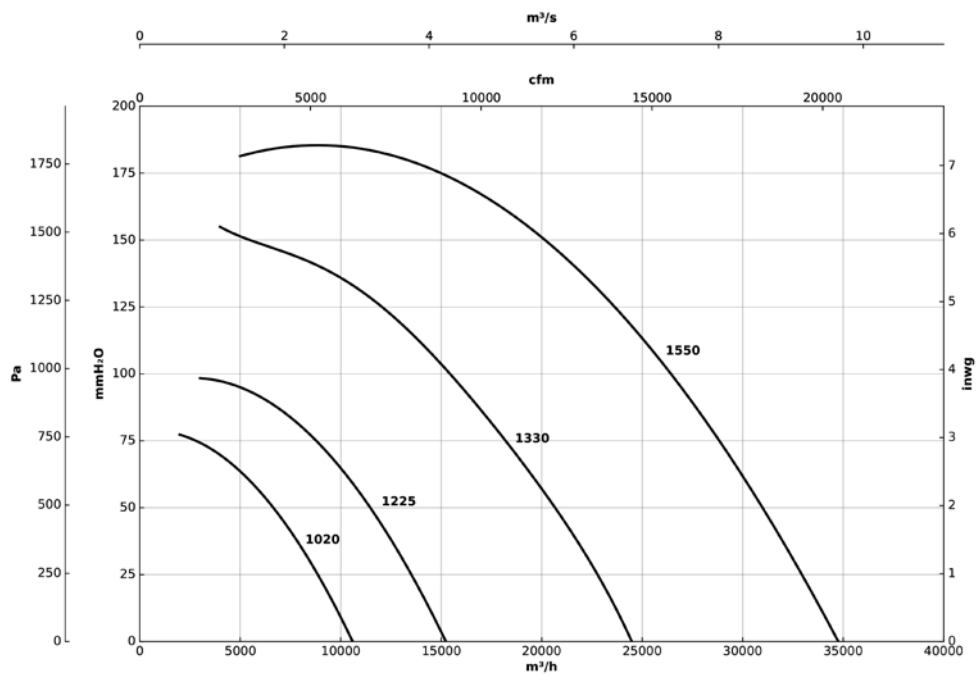
Q= Flow rate in m³/h, m³/s and cfm

Pe= Static pressure in mm H₂O, Pa and inwg

4T=1500 r/min



4T=1500 r/min

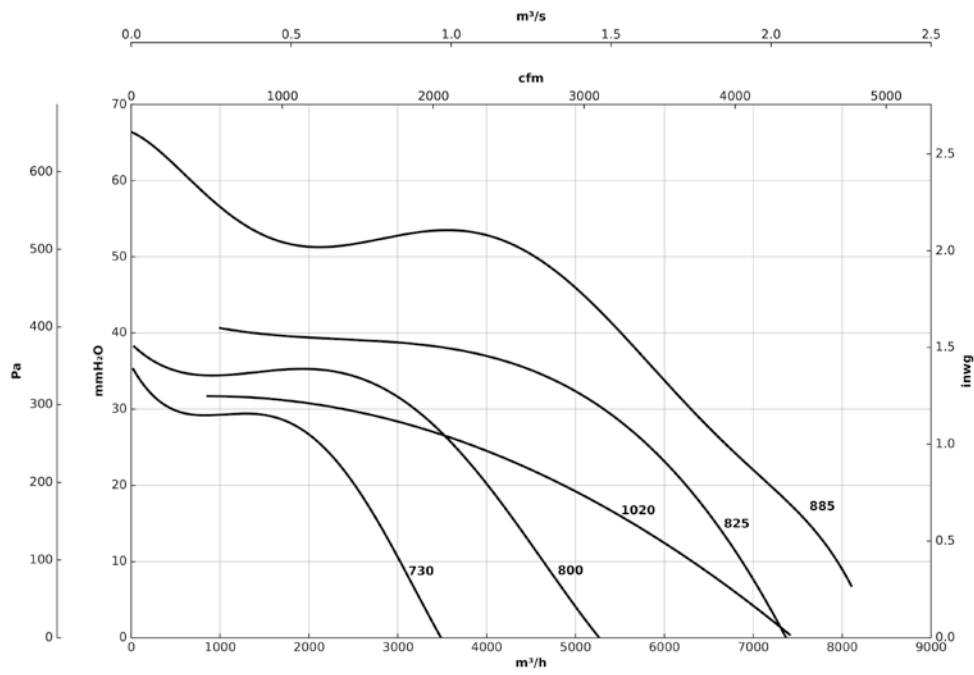


Characteristic curves

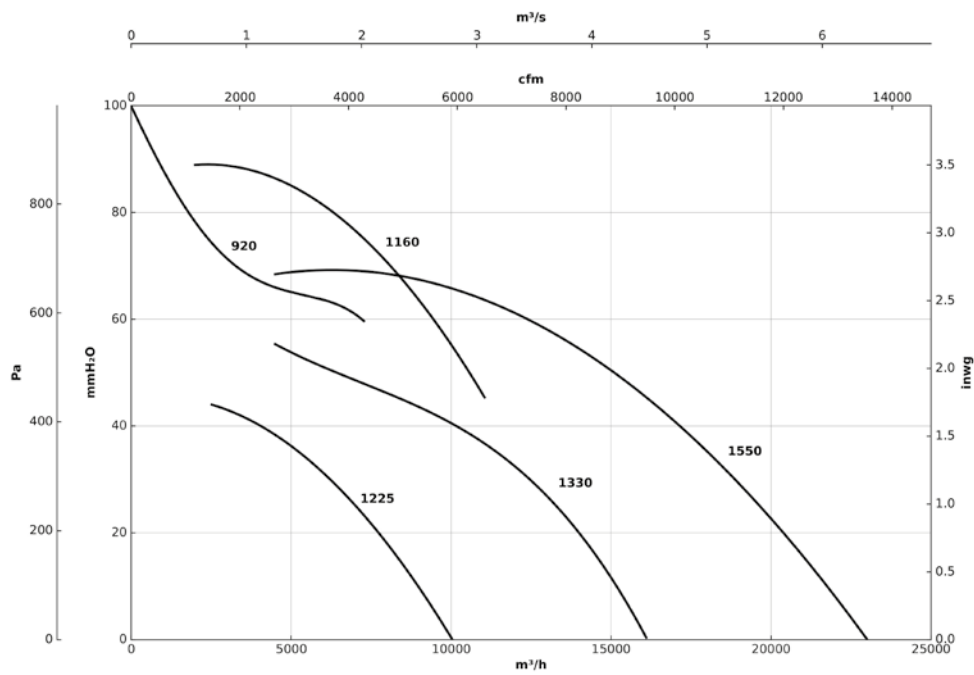
Q= Flow rate in m³/h, m³/s and cfm

Pe= Static pressure in mm H₂O, Pa and inwg

6T=1000 r/min



6T=1000 r/min



Accessories



INT



IAT



C2V



RPA



B



BD



BIC



ACE ACE/400



CABLE BOX



AET



CENTRAL CO



VSD3/A-RFT
- VSD1/A-RFM